

## SUBMITTAL DATA

KUL18HPJ132IA / KUL18HPJ132OA  
**18000 BTU/H Wall Mounted Heat Pump System**

Job Name

Purchaser

Submitted to

Unit Designation

Location

Date

Engineer

For

Schedule No.



KUL18HPJ132IA



KUL18HPJ132OA



YAP1F7F



XE71 (Optional)

### GENERAL FEATURES

- AHRI Certificate: [215424787](#)
- High Efficiency DC Inverter Technology
- Compact and Quiet Design
- Auto-Clean Function on Indoor Unit
- Wireless Remote with LCD Display
- Wired Controller Options
- New R32 Refrigerant
- Composite Drain Pan
- Wi-Fi Included (Factory Installed)
- Low Ambient Cooling down to -20°F (Range -20°F to 122°F)
- Low Ambient Heating down to -22°F (Range -22°F to 86°F)
- Coil (Indoor and Outdoor) Copper Tube / Aluminum Fin
- Blue Colored Fin - 500 Hrs Salt Spray Tested

## SPECIFICATIONS, FEATURES & FUNCTION SUMMARY

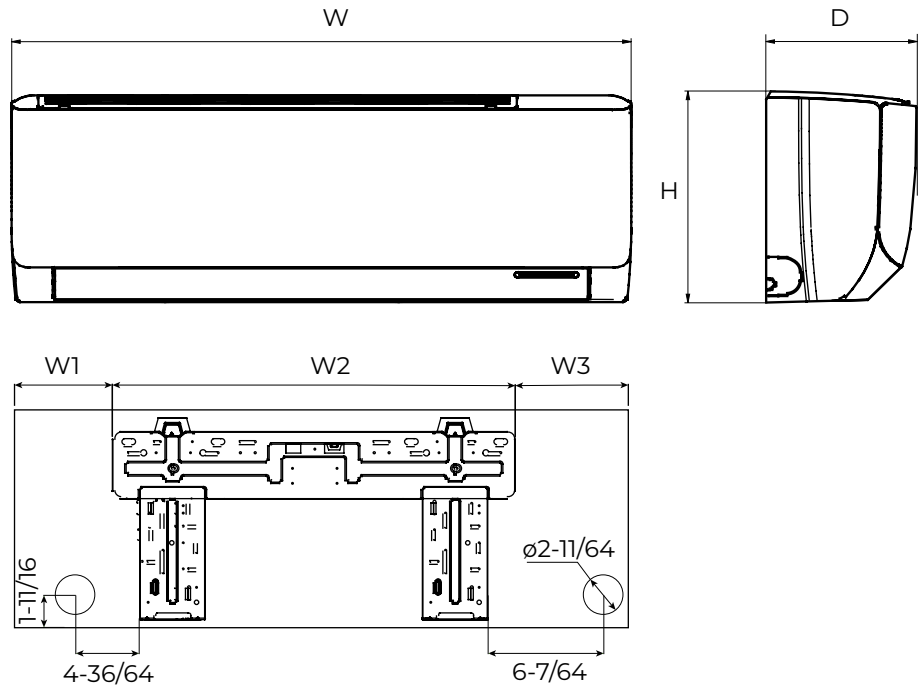
| SYSTEM TYPE                                       |                |       | HEAT PUMP                                              |  | FEATURES & FUNCTIONS SUMMARY |  |
|---------------------------------------------------|----------------|-------|--------------------------------------------------------|--|------------------------------|--|
| Outdoor Model                                     |                |       | KUL18HPJ1320A                                          |  | Inverter Type                |  |
| Indoor Model                                      |                |       | KUL18HPJ1321A                                          |  | G20                          |  |
| SYSTEM PERFORMANCE                                |                |       |                                                        |  |                              |  |
| Cooling Capacity                                  | Min - Max      | Btu/h | 15,073 -30,146                                         |  |                              |  |
|                                                   | Capacity @95°F | Btu/h | 18,000                                                 |  |                              |  |
| Heating Capacity                                  | Min - Max      | Btu/h | 12,970 - 26,470                                        |  |                              |  |
|                                                   | Capacity @47°F | Btu/h | 18,000                                                 |  |                              |  |
|                                                   | Capacity @17°F | Btu/h | 14,700                                                 |  |                              |  |
|                                                   | Capacity @5°F  | Btu/h | 14,600                                                 |  |                              |  |
| SEER2                                             |                |       | 24.5                                                   |  |                              |  |
| EER2                                              |                |       | 13.65                                                  |  |                              |  |
| HSPF2                                             |                |       | 9.0                                                    |  |                              |  |
| COP @5°F                                          |                |       | 1.9                                                    |  |                              |  |
| Cooling Temperature Range                         |                | °F    | -20 - 122                                              |  |                              |  |
| Heating Temperature Range                         |                | °F    | -22 - 86                                               |  |                              |  |
| Refrigerant Type                                  |                |       | R32                                                    |  |                              |  |
| INDOOR UNIT                                       |                |       | KUL18HPJ1321A                                          |  |                              |  |
| Air flow (Min - Max)                              |                | CFM   | 324 - 589                                              |  |                              |  |
| Sound Pressure Level (Min - Max)                  |                | dB(A) | 27 - 48                                                |  |                              |  |
| Dehumidification                                  |                | pt/hr | 3.80                                                   |  |                              |  |
| External Dimensions (W x H x D)                   |                | in    | 38-21/32 x 12-1/4 x 8-45/64                            |  |                              |  |
| Package Dimension (W x H x D)                     |                | in    | 41-7/64 x 15-5/32 x 11-11/16                           |  |                              |  |
| Net Weight                                        |                | lbs   | 28.7                                                   |  |                              |  |
| Gross Weight                                      |                | lbs   | 34.2                                                   |  |                              |  |
| OUTDOOR UNIT                                      |                |       | KUL18HPJ1320A                                          |  |                              |  |
| Compressor Type                                   |                |       | G20 / SINGLE CYLINDER / 1 - STAGE INVERTER             |  |                              |  |
| Sound Pressure Level                              |                | dB(A) | 59                                                     |  |                              |  |
| External Dimensions (W x H x D)                   |                | in    | 37-23/32 x 25-63/64 x 15-53/64                         |  |                              |  |
| Package Dimension (W x H x D)                     |                | in    | 40-5/8 x 29-1/64 x 17-61/64                            |  |                              |  |
| Net Weight                                        |                | lbs   | 94.8                                                   |  |                              |  |
| Gross Weight                                      |                | lbs   | 104.7                                                  |  |                              |  |
| REFRIGERANT PIPING                                |                |       |                                                        |  |                              |  |
| Refrigerant Charge - R32                          |                | oz    | 40.6                                                   |  |                              |  |
| Additional Charge                                 |                | oz/ft | 0.2                                                    |  |                              |  |
| Line Set Size (Liquid - Gas) - Flared Connections |                | in    | 1/4 - 1/2                                              |  |                              |  |
| Pre-Charge Length                                 |                | ft    | 25                                                     |  |                              |  |
| Pipe Length (Min - Max)                           |                | ft    | 10 - 131                                               |  |                              |  |
| Max. Pipe Elevation                               |                | ft    | 82                                                     |  |                              |  |
| ELECTRICAL                                        |                |       |                                                        |  |                              |  |
| Power Supply                                      |                |       | 208-230V / 1Ph / 60Hz<br>(Powered by the Outdoor Unit) |  |                              |  |
| Voltage Range (Min - Max)                         |                | VAC   | 187 - 253                                              |  |                              |  |
| Rated Current - Cooling                           |                | A     | 11.5                                                   |  |                              |  |
| Rated Current - Heating                           |                | A     | 11.5                                                   |  |                              |  |
| MCA                                               |                | A     | 16                                                     |  |                              |  |
| MOCP                                              |                | A     | 20                                                     |  |                              |  |
| Suggested Breaker Size                            |                | A     | 20                                                     |  |                              |  |
| Main Power Wire Size                              |                | AWG   | Per Local Code                                         |  |                              |  |
| Interconnecting Wire Size                         |                | AWG   | 14 / 4                                                 |  |                              |  |
| Ultra Low Frequency Torque Control                |                |       |                                                        |  | Yes                          |  |
| Power Factor Correction                           |                |       |                                                        |  | Yes                          |  |
| Basepan With Electric Heater                      |                |       |                                                        |  | Yes                          |  |
| Indoor & Outdoor Fin Coating (Blue Fin)           |                |       |                                                        |  | Yes                          |  |
| Intelligent Defrosting                            |                |       |                                                        |  | Yes                          |  |
| Intelligent Preheating                            |                |       |                                                        |  | Yes                          |  |
| Low Voltage Startup                               |                |       |                                                        |  | Yes                          |  |
| Memory/Power Failure Recovery                     |                |       |                                                        |  | Yes                          |  |
| Self Diagnosis                                    |                |       |                                                        |  | Yes                          |  |
| Wired Controller Interface                        |                |       |                                                        |  | Yes                          |  |
| WiFi Included                                     |                |       |                                                        |  | Yes                          |  |
| NEW! Easy Service Access                          |                |       |                                                        |  | Yes                          |  |
| Indoor Fan Type                                   |                |       |                                                        |  | Crossflow                    |  |
| Multi Fan Speeds                                  |                |       |                                                        |  | 7 Speeds                     |  |
| Indoor Unit Display                               |                |       |                                                        |  | Yes                          |  |
| Auxiliary Electrical Heater                       |                |       |                                                        |  | No                           |  |
| Ventilation (Outdoor Air)                         |                |       |                                                        |  | No                           |  |
| REMOTE CONTROLLER FUNCTIONS                       |                |       |                                                        |  |                              |  |
| NEW! Auto Clean                                   |                |       |                                                        |  | Yes                          |  |
| Auto Mode                                         |                |       |                                                        |  | Yes                          |  |
| Auto Fan                                          |                |       |                                                        |  | Yes                          |  |
| Auto Swing (Horizontal Auto Swing)                |                |       |                                                        |  | Yes                          |  |
| Auto Swing - 180° (Vertical Auto Swing)           |                |       |                                                        |  | Yes                          |  |
| Clock                                             |                |       |                                                        |  | Yes                          |  |
| Dry Mode                                          |                |       |                                                        |  | Yes                          |  |
| Dry Anti-Mildew (X-Fan) Mode                      |                |       |                                                        |  | Yes                          |  |
| Energy Saving Mode                                |                |       |                                                        |  | Yes                          |  |
| Dirty Filter Alert                                |                |       |                                                        |  | Yes                          |  |
| Fan Speed Control                                 |                |       |                                                        |  | Yes                          |  |
| I Feel Function                                   |                |       |                                                        |  | Yes                          |  |
| Privacy Lock                                      |                |       |                                                        |  | Yes                          |  |
| Quiet Mode                                        |                |       |                                                        |  | Yes                          |  |
| Room Temperature Display                          |                |       |                                                        |  | Yes                          |  |
| Sleep Mode                                        |                |       |                                                        |  | Yes                          |  |
| 3 Sleep Mode Options                              |                |       |                                                        |  | Yes                          |  |
| Timer Mode                                        |                |       |                                                        |  | Yes                          |  |
| Turbo Mode                                        |                |       |                                                        |  | Yes                          |  |
| Display On/Off Control                            |                |       |                                                        |  | Yes                          |  |
| Freeze Guard Mode                                 |                |       |                                                        |  | Yes                          |  |
| Power Failure Mode                                |                |       |                                                        |  | Yes                          |  |
| Humidity Control                                  |                |       |                                                        |  | Yes                          |  |

## DIMENSIONS

### INDOOR UNIT

Unit: inch

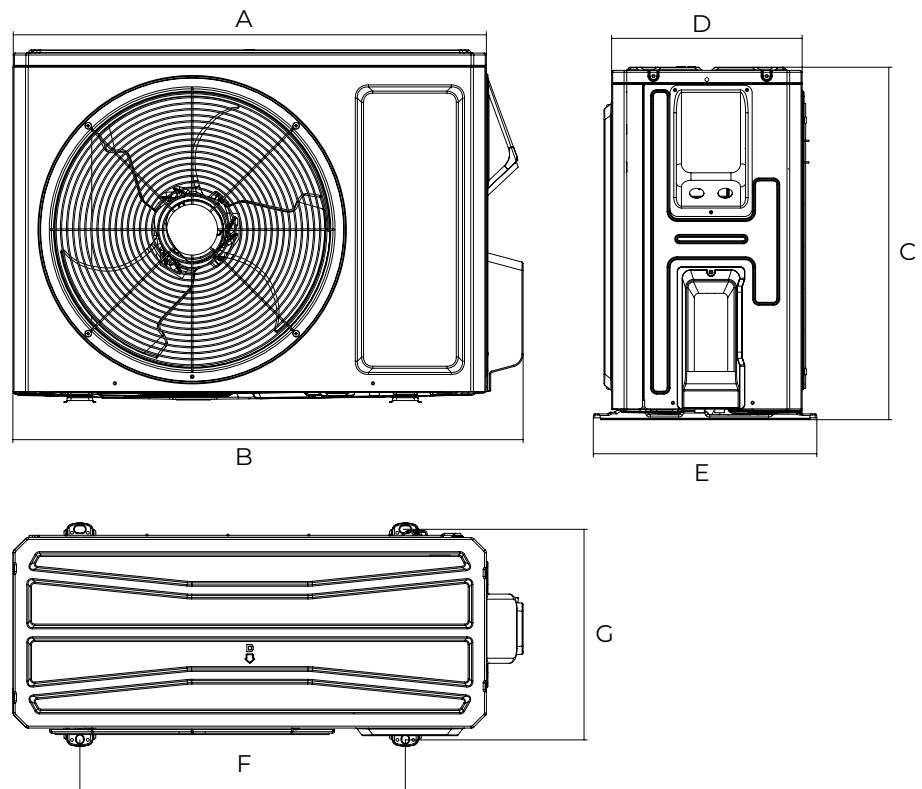
| KUL18HPJ1321A |          |
|---------------|----------|
| DIMENSIONS    |          |
| W             | 38-21/32 |
| H             | 12-1/4   |
| D             | 8-45/64  |
| W1            | 4-53/64  |
| W2            | 27-55/64 |
| W3            | 5-63/64  |



### OUTDOOR UNIT

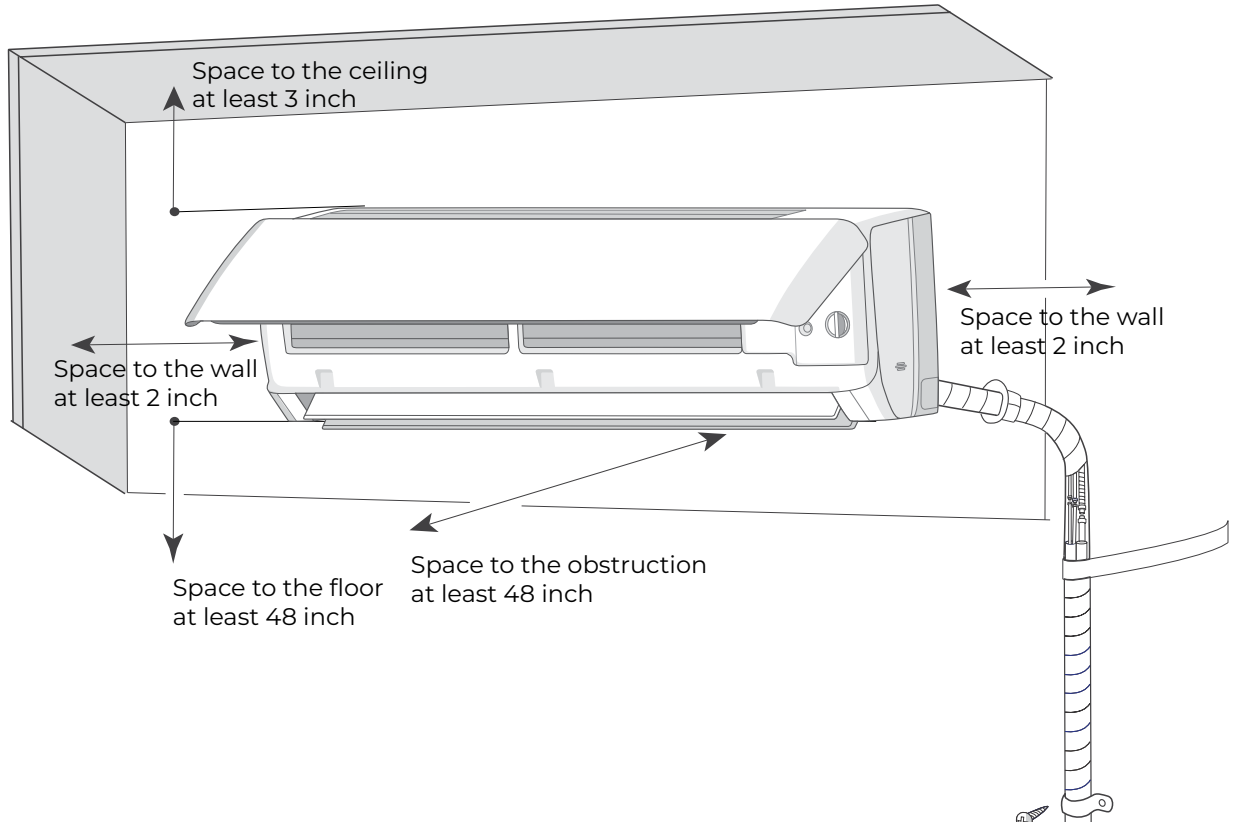
Unit: inch

| KUL18HPJ1320A |          |
|---------------|----------|
| DIMENSIONS    |          |
| A             | 35       |
| B             | 37-23/32 |
| C             | 25-63/64 |
| D             | 13-25/64 |
| E             | 15-53/64 |
| F             | 22-7/16  |
| G             | 14-39/64 |

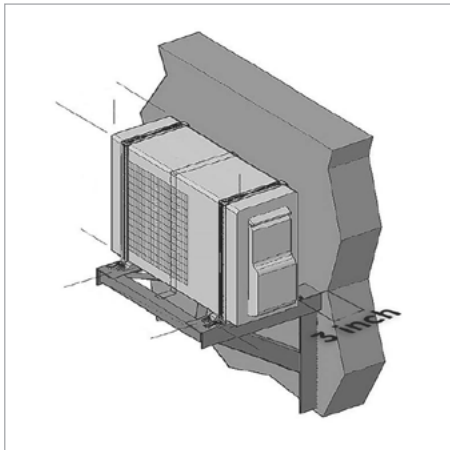


# CLEARANCES

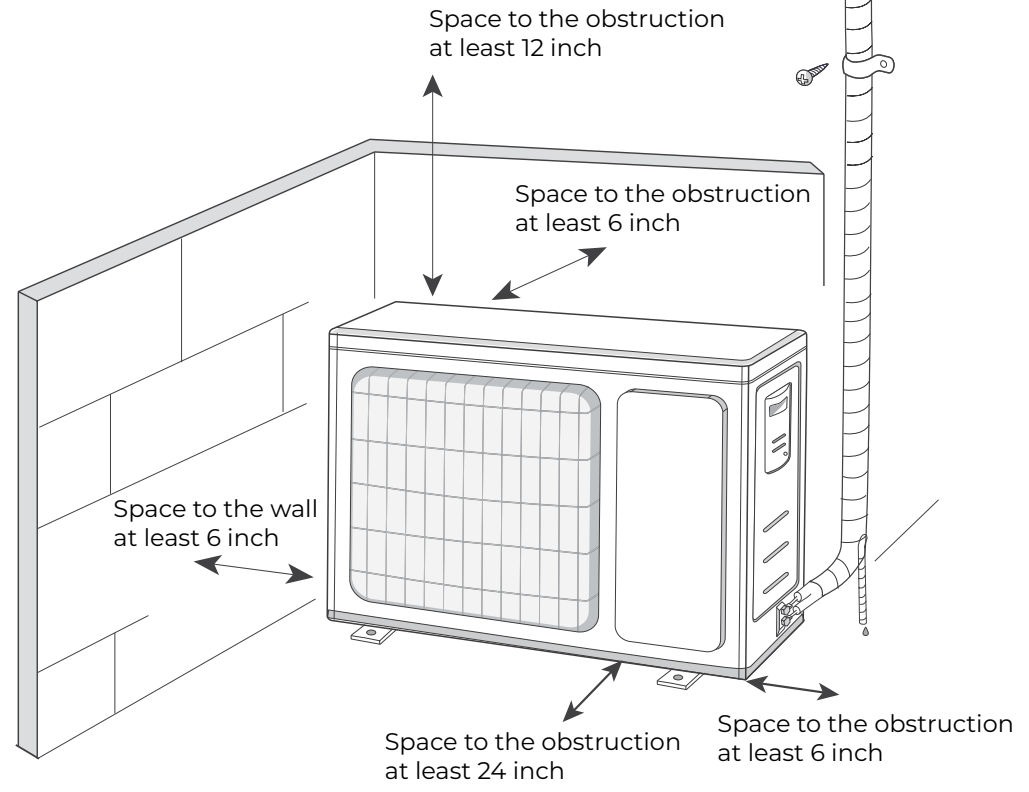
## INDOOR UNIT Minimum clearance



## OUTDOOR UNIT Minimum clearance



**NOTE:**  
If bottom of the unit is free of airflow obstructions similar to the mounting bracket figure, the clearance to the wall on the back can be reduced to 3 inches.



Specifications are subject to change without notice. Manufacturer reserves the right to discontinue or modify specifications or designs without notice or without incurring obligations. All Rights reserved.