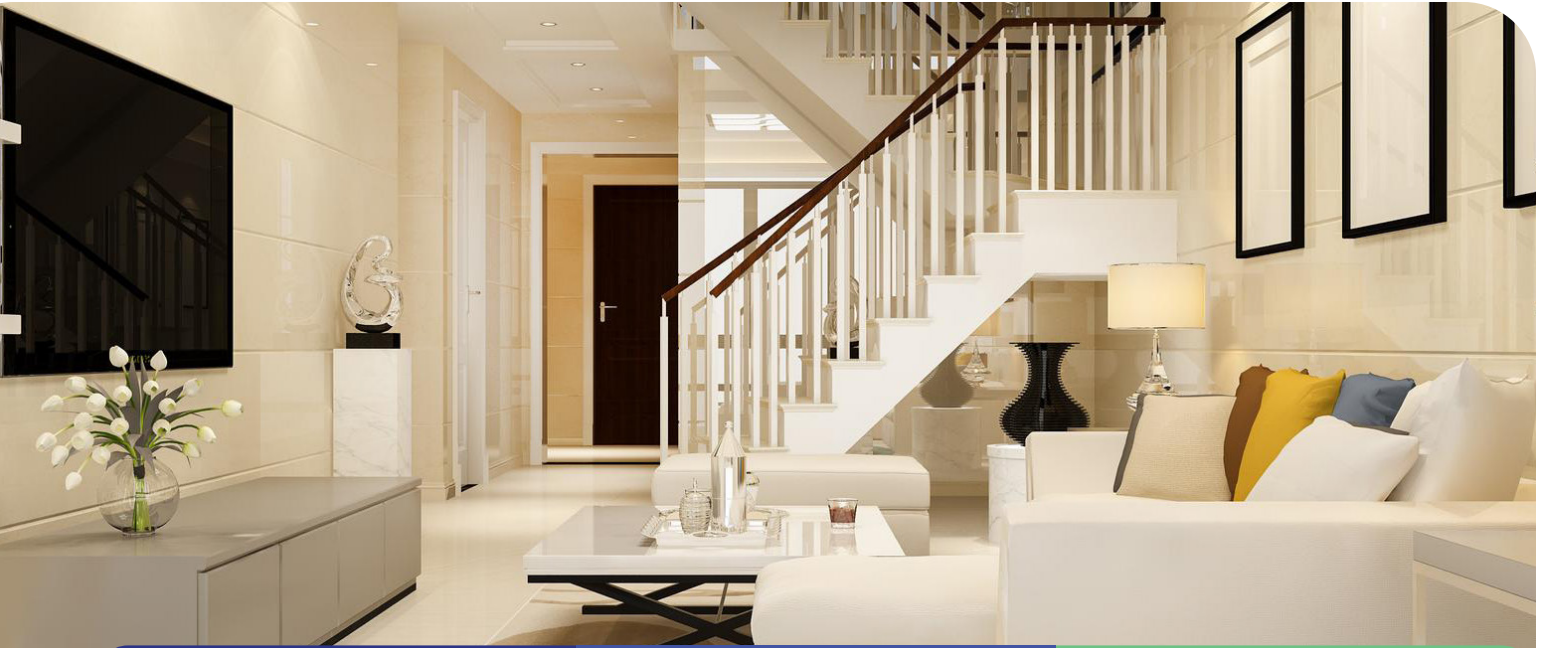


## DIRECTIONAL AIRFLOW IN A COMPACT, DISCREET DESIGN



**HIGH EFFICIENCY,  
22 SEER2 / 13.1 EER2  
9.5 HSPF2**



**COOLING RANGE:  
-20°F - 122°F  
HEATING RANGE:  
-22°F - 86°F**



**MAXIMUM LINE LENGTH:  
131 FT.**



- Multiple fan speeds
- Swing louver control
- Automatic voltage adaption
- Internal condensate drain pump
- Sentry float switch
- Refrigerant sensor
- Anti-corrosion Fins
- High Quality Motor

SYSTEM TYPE		HEAT PUMP							
Indoor Model		OWC09HPJ132IA	OWC12HPJ132IA	OWC18HPJ132IA	OWC20HPJ132IA				
Outdoor Model		NOV09HPJ1320A	NOV12HPJ1320A	NOV18HPJ1320A	NOV18HPJ1320A				
SYSTEM PERFORMANCE									
Cooling Capacity	Min - Max	Btu/h	2,559 - 11,601	2,300 - 15,500	5,459 - 19,107	7,880 - 21,599			
	Rated Capacity @95°F	Btu/h	9,100	12,000	18,000	19,000			
Heating Capacity	Min - Max	Btu/h	2,900 - 13,648	3,070 - 14,600	4,265 - 20,472	8,347 - 20,813			
	Rated Capacity @47°F	Btu/h	10,500	12,000	18,000	19,000			
	Rated Capacity @17°F	Btu/h	8,800	10,000	14,700	14,700			
	Rated Capacity @5°F	Btu/h	9,400	10,000	12,600	14,000			
SEER2			22.0	21.5	21.5	21.5			
EER2			13.1	12.3	10.9	10.9			
HSPF2			9.5	9.5	8.5	8.5			
COP @5°F			1.97	1.90	1.80	1.80			
Energy Star®			YES	YES	NO	NO			
Energy Star® Certified with Cold Climate Designation			YES	YES	YES	YES			
Cooling Temperature Range	°F		-20 - 122	-20 - 122	-20 - 122	-20 - 122			
Heating Temperature Range	°F		-22 - 86	-22 - 86	-22 - 86	-22 - 86			
Refrigerant Type			R32	R32	R32	R32			
INDOOR UNIT		OWC09HPJ132IA		OWC12HPJ132IA		OWC18HPJ132IA		OWC20HPJ132IA	
Air flow (Min-Max)	CFM	200 - 324		230 - 353		265 - 412		294 - 441	
Sound Pressure Level (Min - Max)	dB(A)	28 - 37		28 - 41		32 - 43		36 - 46	
Dehumidification	pt/hr	1.69		2.96		3.80		4.23	
External Dimensions (L x D x H)	in	38-55/64 x 15-5/32 x 7-1/64		38-55/64 x 15-5/32 x 7-1/64		38-55/64 x 15-5/32 x 7-1/64		38-55/64 x 15-5/32 x 7-1/64	
Package Dimension (L x W x H)	in	51-29/64 x 19-23/32 x 12-13/64		51-29/64 x 19-23/32 x 12-13/64		51-29/64 x 19-23/32 x 12-13/64		51-29/64 x 19-23/32 x 12-13/64	
Net Weight	lbs	43.0		43.0		44.1		44.1	
Gross Weight	lbs	58.4		58.4		59.5		59.5	
CASSETTE GRILLE (REQUIRED)		GREETD01		GREETD01		GREETD01		GREETD01	
Grille Dimension (L x D x H)	in	47-1/4 x 18-7/64 x 2-11/64		47-1/4 x 18-7/64 x 2-11/64		47-1/4 x 18-7/64 x 2-11/64		47-1/4 x 18-7/64 x 2-11/64	
Package Dimension (L x W x H)	in	49-51/64 x 21-7/64 x 4-49/64		49-51/64 x 21-7/64 x 4-49/64		49-51/64 x 21-7/64 x 4-49/64		49-51/64 x 21-7/64 x 4-49/64	
Weight (Net / Gross)	lbs	9.26 / 13.23		9.26 / 13.23		9.26 / 13.23		9.26 / 13.23	
OUTDOOR UNIT		NOV09HPJ1320A		NOV12HPJ1320A		NOV18HPJ1320A		NOV18HPJ1320A	
Sound Pressure Level	dB(A)	52		52		59		59	
External Dimensions (L x D x H)	in	31 37/64 x 13 25/32 x 21 27/32		31 37/64 x 13 25/32 x 21 27/32		37-23/32 x 15-53/64 x 25-63/64		37-23/32 x 15-53/64 x 25-63/64	
Package Dimension (L x W x H)	in	34 21/64 x 15 43/64 x 24 13/32		34 21/64 x 15 43/64 x 24 13/32		40-5/8 x 17-61/64 x 29-1/64		40-5/8 x 17-61/64 x 29-1/64	
Net Weight	lbs	70.6		67.3		94.8		94.8	
Gross Weight	lbs	76.1		72.8		104.7		104.7	
REFRIGERANT PIPING									
Refrigerant Charge - R32	oz	30		28.2		40.6		40.6	
Additional Charge	oz/ft	0.2		0.2		0.2		0.2	
Indoor Piping Connection (Liquid - Gas)*	in	1/4 - 3/8		1/4 - 3/8		1/4 - 1/2		1/4 - 1/2	
Outdoor Piping Connection (Liquid - Gas)	in	1/4 - 3/8		1/4 - 1/2		1/4 - 1/2		1/4 - 1/2	
Pre-Charge Length	ft	25		25		25		25	
Pipe Length (Min - Max)	ft	10 - 66		10 - 66		10 - 131		10 - 131	
Max. Pipe Elevation	ft	40		40		82		82	
ELECTRICAL									
Power Supply		208-230V / 1Ph / 60Hz (Powered by the Outdoor Unit)							
Voltage Range (Min - Max)	VAC	187 - 253		187 - 253		187 - 253		187 - 253	
Rated Current - Cooling	A	5.8		7.0		11.5		11.5	
Rated Current - Heating	A	7.6		7.73		11.5		11.5	
MOCF	A	15		15		20		20	
MCA	A	10		10		16		16	
Main Power Wire Size	AWG	Per Local Code							
Interconnecting Wire Size	AWG	14 / 4							
LIMITED WARRANTY		5 Years Parts, 7 Years Compressor - Residential & Commercial							

\* Refrigerant piping must be sized by the indoor unit connections. If the outdoor unit connection is a different size from the indoor unit connection, a flare adapter must be purchased separately and installed on the outdoor unit.



Specifications are subject to change without notice. Manufacturer reserves the right to discontinue, or change at any time, specifications or designs without notice or without incurring obligations. ©2026 All rights reserved.

Version: 4 May 2026